



V16.5 - e-Commerce Gateway Import-Export Schema Documentation

Modification Date: 2013-11-25

Contents

1	Introduction	4
2	Global View	5
2.1	ChainDrive Product Export:.....	5
2.2	ChainDrive Order Header Import	6
2.3	ChainDrive Line Detail Import	7
2.4	ChainDrive Order Payment Import.....	8
2.5	ChainDrive Multiple Ship-to's per Order.....	9
2.6	ChainDrive Order Consultation	10
2.7	ChainDrive Customer Bill-to Consultation	11
3	Detailed Mapping Fields	12
3.1	Export Product, Prices and Corporate Inventory	12
3.2	Export Inventory by Store.....	19
3.3	Import Order Header	20
3.4	Import Line Details	23
3.5	Import Payments	24
3.6	Import Multiple Ship-to's per Order	26
3.7	Export Order Consultation/Tracking #.....	27
3.8	Export Customer Bill-to Consultation	29
3.9	Export Kitted Components	30

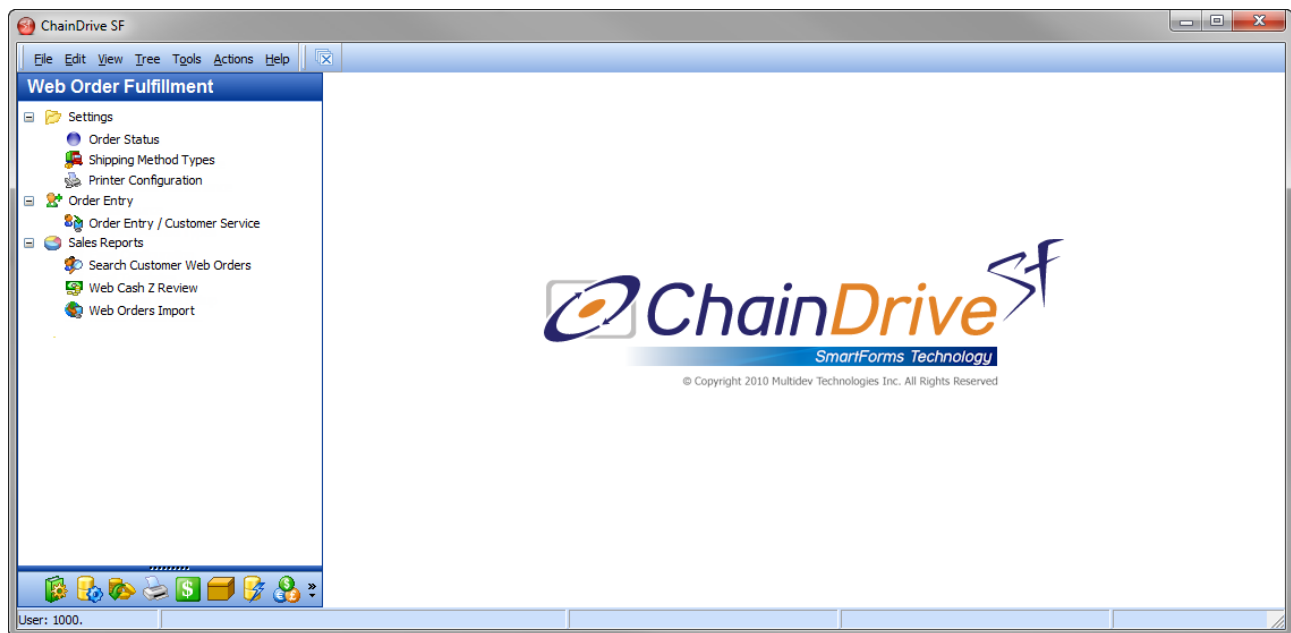
Author	Modification	Date
Mathieu H.	- Added inv_shipalone, inv_giftboxproduct and inv_oversizecharge to ChainDrive Product Export - Created ChainDrive Order Consultation	2013-04-08
Stan L.	- Added sku_nextdeliverydate to ChainDrive Product Export	2013-04-30
Nick C	- Added descriptions to web product info in ChainDrive Product Export	2013-05-03
Nick C	- Added INV_ISWEBPRODUCT in ChainDrive Product Export - Edited description of INV_CREATESTAT in ChainDrive Product Export	2013-05-28
Nick C	- Added new ChainDrive Multiple Ship-to's per order - Added field GROUPID in ChainDrive Line Details - Added field EXTERNAMLORDERNUMBER, WS_USERID, and SOURCECODE in ChainDrive Order Header - Added import_order, import_order_line_items, import_ordergroups, import_order_payment table names	2013-06-05
Nick C	- Added BOX_SHIPPINGCHARGES, BOX_WEIGHT and BOX_TRANSPORT to ChainDrive Order Consultation - Added field GROUPDID in ChainDrive Order Header - Added new ChainDrive Customer Bill-to	2013-06-06
Nick C	- Added NHG1	2013-07-10
Nick C	- Added Chaindrive_Inventory_by_store view	2013-07-10
Nick C	- Added Authorize.net screenshots	2013-07-11
Nick C	- Added Chaindrive inventory view; where clauses	2013-07-19
Nick C	- Add new fields in ChainDrive_customerbillto view	2013-10-10
Nick C	- Added PKPRICE2 and PKPRICE3 as a field - Added ALT_3PLSKU and ALT_VENDORBARCODE as a field - Added ExplodeKitatSale as a field - Added branch ID as a field - Added Kits Components	2013-11-22

1 Introduction

ChainDrive's E-Commerce Gateway is the vital link between the web store and all ChainDrive's back-office. It seamlessly updates the web store with new product information, price changes and item availability. The gateway connectivity to the centralized database allows for real-time inventory updates as well as all client web purchase details that are tracked and captured in ChainDrive CRM. Therefore using ChainDrive's flexible E-Commerce Gateway requires the setup of multiple information mapping fields to ensure seamless operations.

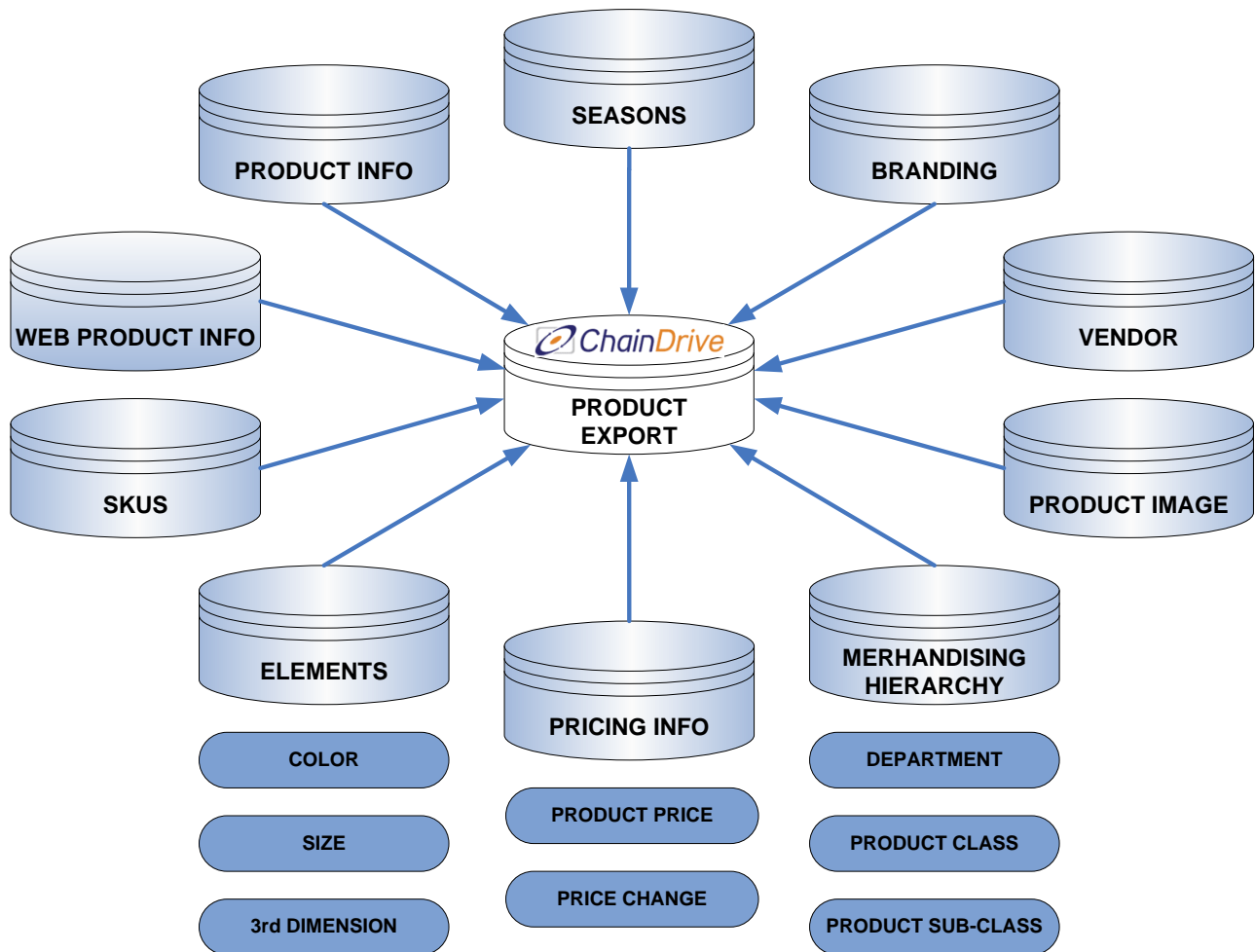
Information mapping mainly affects the following data: the product information, the order header, the order details and the order payments.

First, proper product mapping will ensure optimal product information is sent to the customer WEB solution. The possibility to swiftly address shopping cart orders and a complete visibility of your inventory at any location giving you the ability to quickly move merchandise when needed are both offered. Order processing is painless and tracking is made simple.

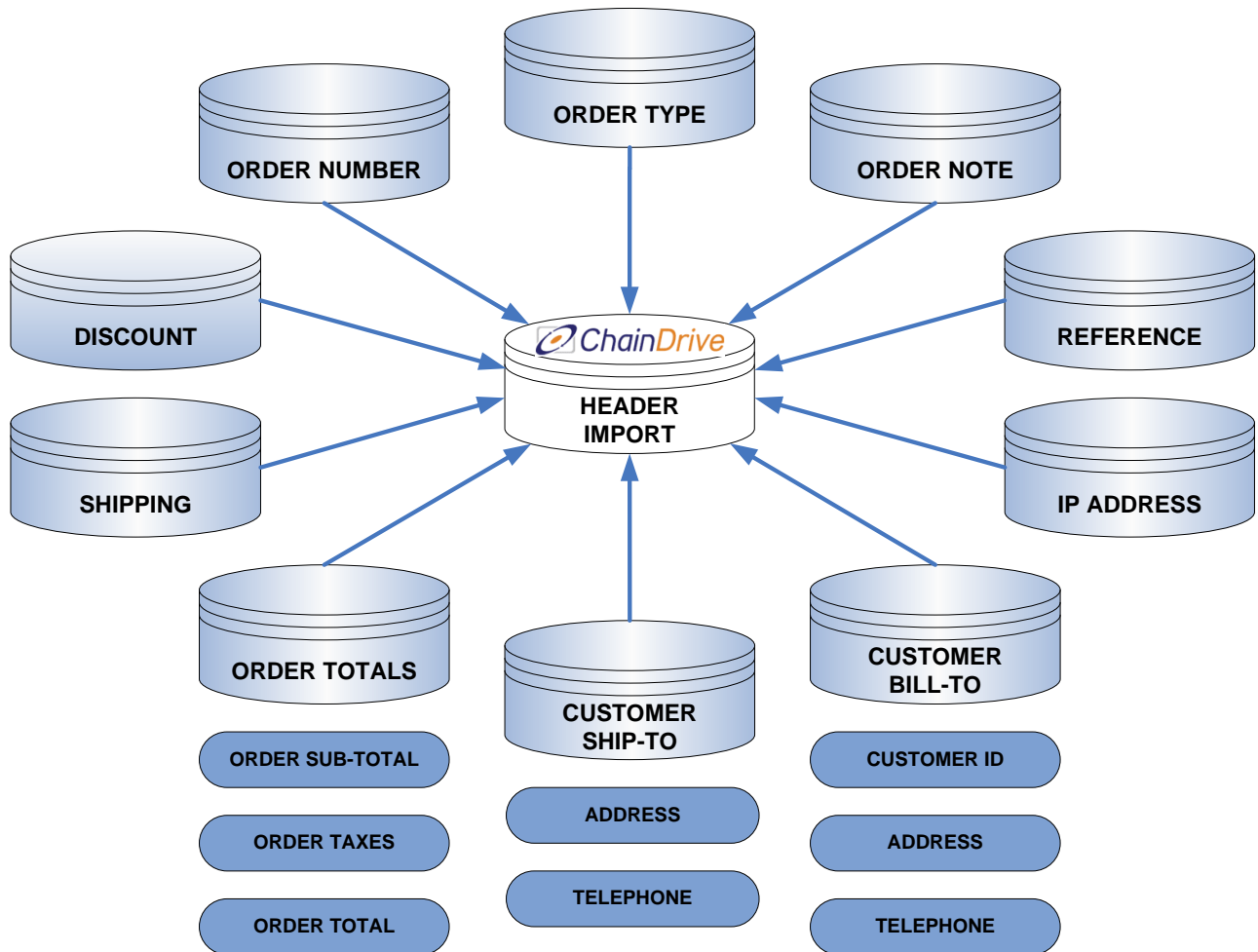


2 Global View

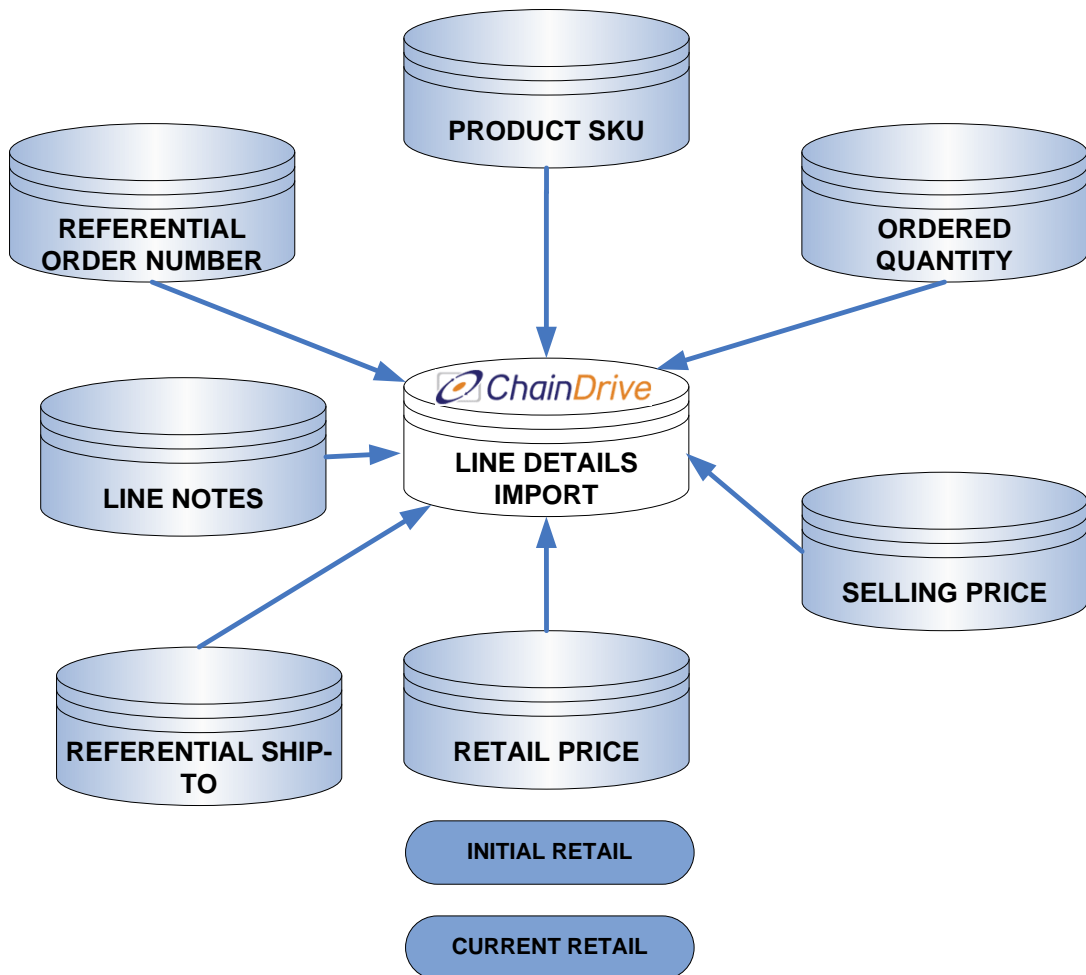
2.1 ChainDrive Product Export:



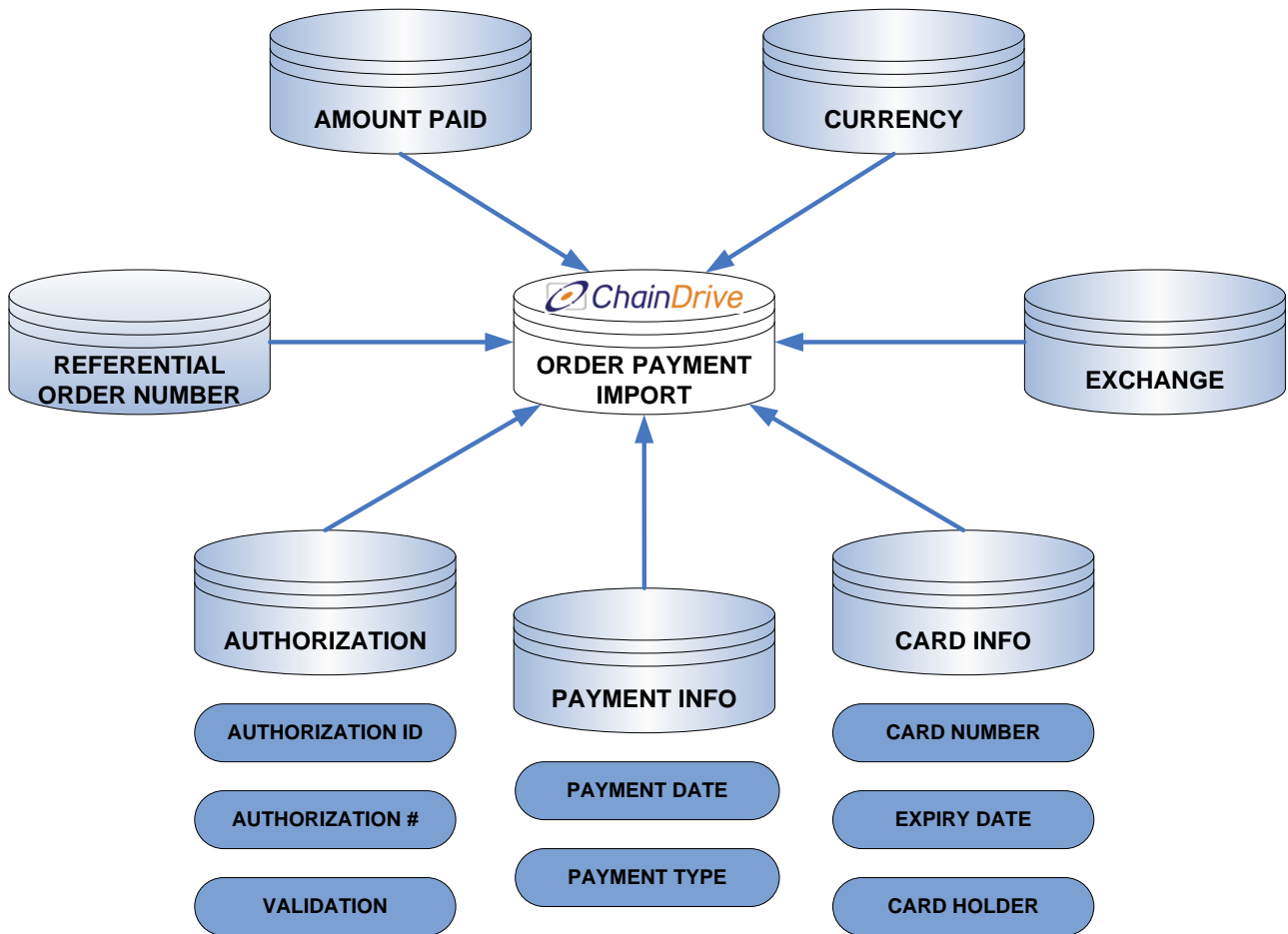
2.2 ChainDrive Order Header Import



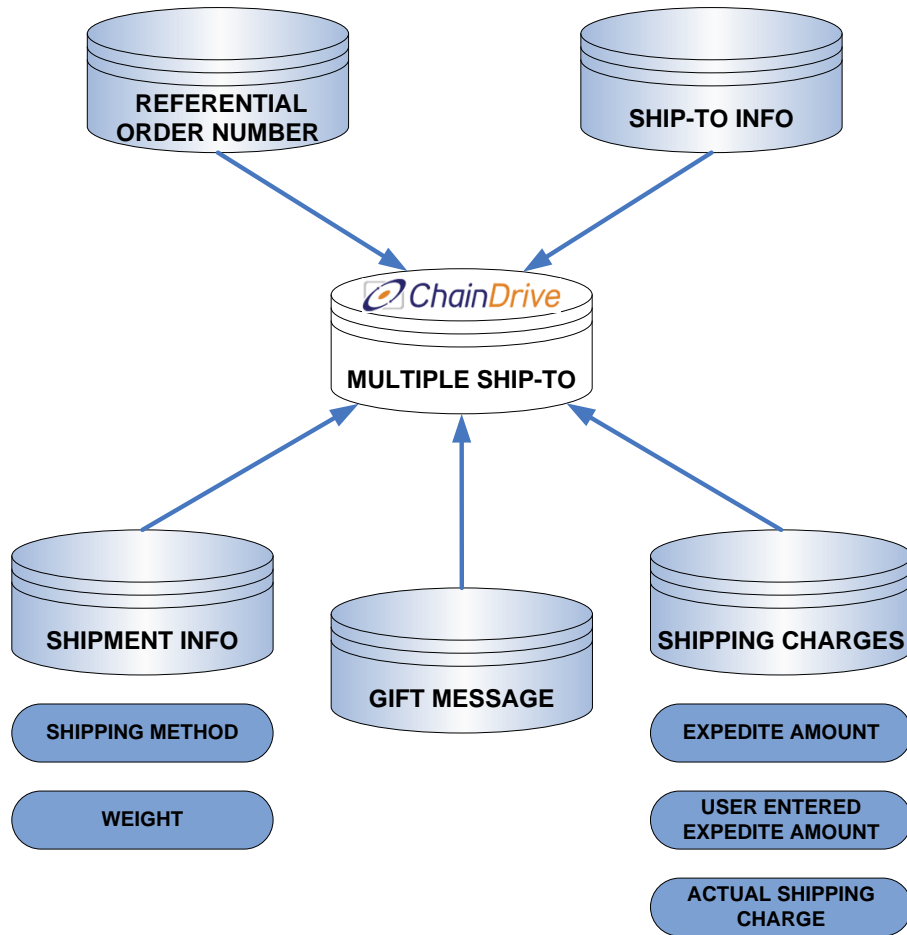
2.3 ChainDrive Line Detail Import



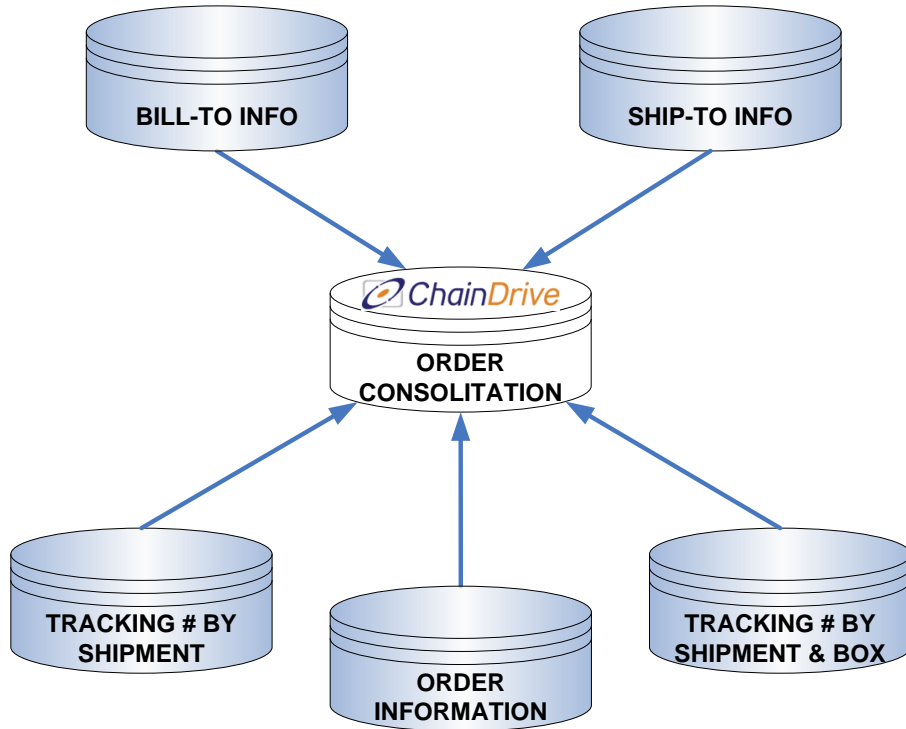
2.4 ChainDrive Order Payment Import



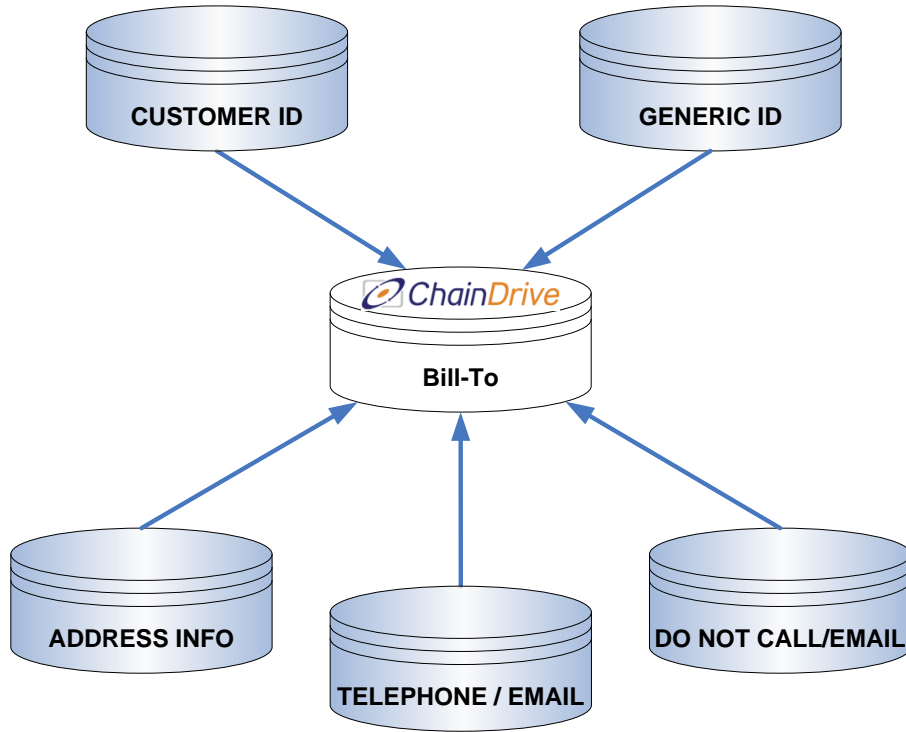
2.5 ChainDrive Multiple Ship-to's per Order



2.6 ChainDrive Order Consultation



2.7 ChainDrive Customer Bill-to Consultation



3 Detailed Mapping Fields

3.1 Export Product, Prices and Corporate Inventory

If ODBC connectivity using the Firebird driver is used, the view is called: ChainDrive_inventory

SQL Statement:

```
Select *  
from ChainDrive_inventory  
where INV_ISWEBPRODUCT = 'Y' and PR_PRICEZONEID = 'WB' and SKU_SKUID = ALT_SKUID  
order by INV_PRODUCTCODE  
ROWS 100
```

Where Clauses

INV_ISWEBPRODUCT

PR_PRICEZONEID

If an item(s) are sold using at a different price online versus stores and the client is using a separate price zone for the web store pricing use a where equaling to the web's price zone ID

SKU_SKUID versus ALT_SKUID

SKU_SKUID is Chaindrive's unique SKU ID. ALT_SKUID is if the client has an alternate SKU ID to sell this item with. If you do not want to see the ALT_SKUID for the item, use where SKU_SKUID = ALT_SKUID

PRODUCT / STYLE INFORMATION

FIELD	DESCRIPTION	VALUE
INV_PRODUCTID	ChainDrive auto-generated Product ID number	alphanumeric 8
INV_INVCREATESTAT	Indicate the current product status: Definition= 0 Approved= 1 Exclude from stores= X Prompt price= D Exclude Everywhere= K	char 1
INV_PRODUCTCODE	Product code / Style #	alphanumeric 20
INV_DEFSUPPPRODID	Supplier Style # assigned by the vendor to this specific product	alphanumeric 20
INV_DESC_1	Product description : primary language	alphanumeric 40
INV_DESC_2	Product description : secondary language	alphanumeric 40
INV_COORDINATEGRP	Product coordinate group	alphanumeric 40
INV_BMKS	Product type (base, multi-dimensional, kit, serial) B = Base M = Multi-Dimensional K = Kitted N = Non-Inventory	char 1
INV_WEIGHT	Product weight	integer 4
INV_COST	Product average cost	num (8;2)
INV_LASTPURCHASECOST	Product last purchase cost	num (8;2)
INV_IMDESC_1	Product/Style description on PO :appearing on PO line 1	alphanumeric 50
INV_IMDESC_2	Product/Style description on PO: appearing on PO line 2	alphanumeric 50
INV_UKDESC_1	Product/Style description on PO :appearing on PO line 3	alphanumeric 50
INV_UKDESC_2	Product/Style internal comments	alphanumeric 50
INV_CDS_	Product : system/table record creation date and timestamp	date, time
INV_EDS_	Product : system/table record modification date and timestamp	date, time
INV_AVAILABLE	Product corporate total quantity available to sell. (on hand – reserved – sales back order – defective)	integer 4
INV_ONHAND	Product corporate total quantity on hand	integer 4
INV_ONORDER	Product total quantity on order	integer 4
INV_RESERVED	Product total quantity reserved	integer 4
INV_INTRANSIT	Product total quantity in transit	integer 4
INV_BKORD	Product total back ordered quantity	integer 4
INV_SALESBO	Product total sales back ordered quantity	integer 4
INV_FIRSTSALE	Product first sale date stamp	date
INV_LASTSALE	Product last sale date stamp	date
INV_TOTALSALES	Product lifetime total sales quantity	integer 4
INV_FIRSTPURCH	Product first purchase date stamp	date
INV_LASTPURCH	Product last purchase date stamp	date
INV_TOTALPURCH	Product lifetime total purchased quantity	integer 4
INV_INSTORESON	Date of product first received in store	date
INV_TOTALRECEIVED	Product lifetime total quantity received	integer 4
INV_SHIPALONE	'Y' if product has to be shipped alone, 'N' if not	char 1
INV_GIFTBOXPRODUCT	Gift Box Product ID. Reference INV_PRODUCTID. You can only have one gift box type per product/style. If the product can be gift boxed, you will have a record in this field. If the product is not gift boxed, this field is left blank.	alphanumeric 8
INV_OVERSIZECHARGE	Product over size charge amount	numeric (15;2)
INV_ISWEBPRODUCT	Product is available to sell on the web: Y or N value	Char 1
INV_EXPLODEKITATSALE	This field is to support Virtual Kits. If Y, the virtual kit item is exploded into its components during a sale and return in ChainDrive. If N, it's treated as a final product. Allowed values (Y,N)	Char 1

SEASONS		
FIELD	DESCRIPTION	VALUE
INV_SEASONID	Season ID number	alphanumeric 4
INV_SEASONID_DESC	Season description : primary language	alphanumeric 40
INV_SEASONID_DESC2	Season description : secondary language	alphanumeric 40

BRANDING		
FIELD	DESCRIPTION	VALUE
INV_BRANDNAMECODE	Product brand name code	alphanumeric 10
INV_BRANDNAME_DESC	Product brand name description	alphanumeric 40

TYPE	FIELD	DESCRIPTION	VALUE
VENDOR			
	INV_DEFSUPPID	Vendor ID number	alphanumeric 8
	INV_SUPPLIER_NAME1	Product vendor name : primary language	alphanumeric 30
	INV_SUPPLIER_NAME2	Product vendor name : secondary language	alphanumeric 30

TYPE	FIELD	DESCRIPTION	VALUE
MERCHANDISE HIERARCHY			
	INV_DEPT	Merchandising department ID	integer
	INV_DEPT_DESC1	Merchandising department description : primary language	alphanumeric 150
	INV_DEPT_DESC2	Merchandising department description : secondary language	alphanumeric 150
	INV_PCLASS	Product class ID	alphanumeric 4
	INV_PCLASS_DESC1	Product class description : primary language	alphanumeric 40
	INV_PCLASS_DESC2	Product class description : secondary language	alphanumeric 40
	INV_PCLASS_TAXCLASS	Tax class applicable to the Product class	alphanumeric 3
	INV_PSCLASS	Product sub-class ID	alphanumeric 4
	INV_PSCLASS_DESC1	Product sub-class description : primary language	alphanumeric 40
	INV_PSCLASS_DESC2	Product sub-class description : secondary language	alphanumeric 40
	INV_PSCLASS_TAXCLASS	Tax class applicable to the Product sub-class	alphanumeric 3

TYPE	FIELD	DESCRIPTION	VALUE
WEB PRODUCT INFO			
	WEB_DESC_EN	Product web description : primary language SF Name: English description	blob, 80
	WEB_DESC_FR	Product web description : secondary language SF Name: French description	blob, 80
	WEB_FIELD_1	Product additional web title 1 SF Name: Copy 1	alphanumeric 20
	WEB_FIELD_2	Product additional web title 2 SF Name: Copy 2	alphanumeric 20
	WEB_FIELD_3	Product additional web title 3 SF Name: Field 3	alphanumeric 20
	WEB_DATE_1	Photographer/Image shot date SF Name: Shot date	date
	WEB_DATE_2	Photographer/Image edited date SF Name: Edit date	date
	WEB_DATE_3	Extra date field SF Name: Date 3	date
	WEB_PHOTOGRAPHER	Photographers name SF Name: Photographer	alphanumeric 254
	WEB_MODEL	Model in the photo's name SF Name: Model	alphanumeric 254
	WEB_MODELSIZE	Model's size in the photo SF Name: Model Size	alphanumeric 50
	WEB_RETOUCHER	Image retouched date SF Name: Retoucher	alphanumeric 254
	WEB_KEYWORDS	Keywords for searching online SF Name: Keywords	alphanumeric 254
	WEB_INTERNALNOTES	Web Internal Notes SF Name: Internal Notes	alphanumeric 254
	WEB_UPLOADDATE	Upload date of products to the web SF Name: Upload date	date
	WEB_PUBLISHDATE	Publish date of putting products available on the web site SF Name: Publish Date	date
	WEB_ALTDESC1	Web's alternate description: primary language SF Name: Alt Desc 1	blob, 80
	WEB_ALTDESC2	Web's alternate description: secondary language SF Name: Alt Desc 2	blob, 80

TYPE	FIELD	DESCRIPTION	VALUE
PRODUCT IMAGE			
	IMG_FILEPATH	System path where is located the product image Supports HTML link or static file path.	alphanumeric 200
	IMG_DEFIMAGE	Default image	alphanumeric 1

TYPE	FIELD	DESCRIPTION	VALUE
PRICING INFO			
	PR_PRICEZONEID	Pricing Zone ID number	alphanumeric 2
	PR_CURRID	Pricing currency ID number	alphanumeric 3
	PR_EFDATESTART	Pricing start date	date, time
	PR_EFDATEENDS	Pricing end date	date, time
	PR_UPDATED	Pricing record update timestamp	date, time
	PR_PKPRICE1	Current selling price of the product	numeric (15;2)
	PR_RETAILPRICE	Initial retail price of the product	numeric (15;2)
	PR_MFGSUGGRETPRICE	Manufacturer Suggested Retail Price (MSRP)	numeric (15;2)
	PR_PRICECHANGECODE	Price change code (01, M1, M2, M3, M4, T1)	alphanumeric 2
	PR_PRICECHANGECODES_DESC_1	Price change code description : primary language	alphanumeric 40
	PR_PRICECHANGECODES_DESC_2	Price change code description : secondary language	alphanumeric 40
	PR_DIM1	Dimension 1 Exception specification	alphanumeric 6
	PR_CDS_	Price record : system record creation timestamp	date, time
	PR_EDS_	Price record : system record modification timestamp	date, time

	PR_PKPRICE2	Second tier price level (if necessary)	numeric (15;2)
	PR_PKPRICE3	Third tier price level (if necessary)	numeric (15;2)

TYPE	FIELD	DESCRIPTION	VALUE
ELEMENTS			
	INV_ELECLASS1	Element class for dimension 1	alphanumeric 3
	DIM1_LDESC_1	Dimension 1 Long description : Primary language	alphanumeric 20
	DIM1_LDESC_2	Dimension 1 Long description : Secondary language	alphanumeric 20
	DIM1_SDESC_1	Dimension 1 Short description : Primary language	alphanumeric 5
	DIM1_SDESC_2	Dimension 1 Short description : Secondary language	alphanumeric 5
	DIM1_ELEMENTORDER	Dimension 1 Sort Order	integer
	INV_ELECLASS2	Element class for dimension 2	alphanumeric 3
	DIM2_LDESC_1	Dimension 2 Long description : Primary language	alphanumeric 20
	DIM2_LDESC_2	Dimension 2 Long description : Secondary language	alphanumeric 20
	DIM2_SDESC_1	Dimension 2 Short description : Primary language	alphanumeric 5
	DIM2_SDESC_2	Dimension 2 Short description : Secondary language	alphanumeric 5
	DIM2_ELEMENTORDER	Dimension 2 Sort Order	integer
	INV_ELECLASS3	Element class for dimension 3	alphanumeric 3
	DIM3_LDESC_1	Dimension 3 Long description : Primary language	alphanumeric 20
	DIM3_LDESC_2	Dimension 3 Long description : Secondary language	alphanumeric 20
	DIM3_SDESC_1	Dimension 3 Short description : Primary language	alphanumeric 5
	DIM3_SDESC_2	Dimension 3 Short description : Secondary language	alphanumeric 5
	DIM3_ELEMENTORDER	Dimension 3 Sort Order	integer
	INV_NHG2	Style attribute ID	alphanumeric 6
	INV_NHG2_LDESC_1	Style attribute long description : Primary language	alphanumeric 20
	INV_NHG2_LDESC_2	Style attribute long description : Secondary language	alphanumeric 20
	INV_NHG2_SDESC_1	Style attribute short description : Primary language	alphanumeric 5
	INV_NHG2_SDESC_2	Style attribute short description : Secondary language	alphanumeric 5
	INV_NHG3	Style attribute ID	alphanumeric 6
	INV_NHG3_LDESC_1	Style attribute long description : Primary language	alphanumeric 20
	INV_NHG3_LDESC_2	Style attribute long description : Secondary language	alphanumeric 20
	INV_NHG3_SDESC_1	Style attribute short description : Primary language	alphanumeric 5
	INV_NHG3_SDESC_2	Style attribute short description : Secondary language	alphanumeric 5
	INV_NHG4	Style attribute ID	alphanumeric 6
	INV_NHG4_LDESC_1	Style attribute long description : Primary language	alphanumeric 20
	INV_NHG4_LDESC_2	Style attribute long description : Secondary language	alphanumeric 20
	INV_NHG4_SDESC_1	Style attribute short description : Primary language	alphanumeric 5
	INV_NHG4_SDESC_2	Style attribute short description : Secondary language	alphanumeric 5
	INV_NHG5	Style attribute ID	alphanumeric 6
	INV_NHG5_LDESC_1	Style attribute long description : Primary language	alphanumeric 20
	INV_NHG5_LDESC_2	Style attribute long description : Secondary language	alphanumeric 20
	INV_NHG5_SDESC_1	Style attribute short description : Primary language	alphanumeric 5
	INV_NHG5_SDESC_2	Style attribute short description : Secondary language	alphanumeric 5
	INV_NHG6	Style attribute ID	alphanumeric 6
	INV_NHG6_LDESC_1	Style attribute long description : Primary language	alphanumeric 20
	INV_NHG6_LDESC_2	Style attribute long description : Secondary language	alphanumeric 20
	INV_NHG6_SDESC_1	Style attribute short description : Primary language	alphanumeric 5
	INV_NHG6_SDESC_2	Style attribute short description : Secondary language	alphanumeric 5
	INV_NHG7	Style attribute ID	alphanumeric 6
	INV_NHG7_LDESC_1	Style attribute long description : Primary language	alphanumeric 20
	INV_NHG7_LDESC_2	Style attribute long description : Secondary language	alphanumeric 20
	INV_NHG7_SDESC_1	Style attribute short description : Primary language	alphanumeric 5
	INV_NHG7_SDESC_2	Style attribute short description : Secondary language	alphanumeric 5
	INV_NHG8	Style attribute ID	alphanumeric 6
	INV_NHG8_LDESC_1	Style attribute long description : Primary language	alphanumeric 20
	INV_NHG8_LDESC_2	Style attribute long description : Secondary language	alphanumeric 20
	INV_NHG8_SDESC_1	Style attribute short description : Primary language	alphanumeric 5
	INV_NHG8_SDESC_2	Style attribute short description : Secondary language	alphanumeric 5
	INV_NHG9	Style attribute ID	alphanumeric 6

	INV_NHG9_LDESC_1	Style attribute long description : Primary language	alphanumeric 20
	INV_NHG9_LDESC_2	Style attribute long description : Secondary language	alphanumeric 20
	INV_NHG9_SDESC_1	Style attribute short description : Primary language	alphanumeric 5
	INV_NHG9_SDESC_2	Style attribute short description : Secondary language	alphanumeric 5
	INV_NHG10	Style attribute ID	alphanumeric 6
	INV_NHG10_LDESC_1	Style attribute long description : Primary language	alphanumeric 20
	INV_NHG10_LDESC_2	Style attribute long description : Secondary language	alphanumeric 20
	INV_NHG10_SDESC_1	Style attribute short description : Primary language	alphanumeric 5
	INV_NHG10_SDESC_2	Style attribute short description : Secondary language	alphanumeric 5
	INV_NHG11	Style attribute ID	alphanumeric 6
	INV_NHG11_LDESC_1	Style attribute long description : Primary language	alphanumeric 20
	INV_NHG11_LDESC_2	Style attribute long description : Secondary language	alphanumeric 20
	INV_NHG11_SDESC_1	Style attribute short description : Primary language	alphanumeric 5
	INV_NHG11_SDESC_2	Style attribute short description : Secondary language	alphanumeric 5
	INV_NHG12	Style attribute ID	alphanumeric 6
	INV_NHG12_LDESC_1	Style attribute long description : Primary language	alphanumeric 20
	INV_NHG12_LDESC_2	Style attribute long description : Secondary language	alphanumeric 20
	INV_NHG12_SDESC_1	Style attribute short description : Primary language	alphanumeric 5
	INV_NHG12_SDESC_2	Style attribute short description : Secondary language	alphanumeric 5
	INV_NHG13	Style attribute ID	alphanumeric 6
	INV_NHG13_LDESC_1	Style attribute long description : Primary language	alphanumeric 20
	INV_NHG13_LDESC_2	Style attribute long description : Secondary language	alphanumeric 20
	INV_NHG13_SDESC_1	Style attribute short description : Primary language	alphanumeric 5
	INV_NHG13_SDESC_2	Style attribute short description : Secondary language	alphanumeric 5
	INV_NHG14	Style attribute ID	alphanumeric 6
	INV_NHG14_LDESC_1	Style attribute long description : Primary language	alphanumeric 20
	INV_NHG14_LDESC_2	Style attribute long description : Secondary language	alphanumeric 20
	INV_NHG14_SDESC_1	Style attribute short description : Primary language	alphanumeric 5
	INV_NHG14_SDESC_2	Style attribute short description : Secondary language	alphanumeric 5
	INV_HG1	Style attribute ID	alphanumeric 6
	INV_HG2	Style attribute ID (also linked to web fulfillment process)	alphanumeric 6
	INV_HG3	Style attribute ID	alphanumeric 6
	INV_HG4	Style attribute ID	alphanumeric 5
	INV_HG5	Style attribute ID	alphanumeric 5
	INV_HG6	Promotion Rule	alphanumeric 5
	INV_HG7	Style attribute ID	alphanumeric 5
	INV_NHG1	Style attribute ID	alphanumeric 6
	INV_NHG1_LDESC_1	Style attribute long description : Primary language	alphanumeric 20
	INV_NHG1_LDESC_2	Style attribute long description : Secondary language	alphanumeric 20
	INV_NHG1_SDESC_1	Style attribute short description : Primary language	alphanumeric 5
	INV_NHG1_SDESC_2	Style attribute short description : Secondary language	alphanumeric 5

TYPE	FIELD	DESCRIPTION	VALUE
SKUS			
	SKU_SKUID	ChainDrive SKU ID number	alphanumeric 8
	SKU_DIM1	Dimension ID # 1	alphanumeric 6
	SKU_DIM2	Dimension ID # 2	alphanumeric 6
	SKU_DIM3	Dimension ID # 3	alphanumeric 6
	SKU_DIMDESC_1	Dimension description : Primary language	alphanumeric 20
	SKU_DIMDESC_2	Dimension description : Secondary language	alphanumeric 20
	SKU_POSPRICEADJ	Retail pricing surcharge at SKU level	numeric (15;2)
	SKU_CDS_	Product SKU : system record creation date and time stamp	date, time
	SKU_EDS_	Product SKU : system record modification date and time stamp	date, time
	ALT_SKU	Alternative SKU / barcode	alphanumeric 20
	ALT_CDS_	Alternative SKU / barcode : system record creation date and time stamp	date, time
	ALT_EDS_	Alternative SKU / barcode : system record mods. date and time stamp	date, time
	SKU_AVAILABLE	SKU corporate total quantity available to sell. (on hand – reserved – sales back order – defective)	integer

	SKU_ONHAND	SKU total quantity on hand	integer
	SKU_ONORDER	SKU total quantity on order	integer
	SKU_RESERVED	SKU total quantity reserved	integer
	SKU_INTRANSIT	SKU total quantity in transit	integer
	SKU_BKORD	SKU total back ordered quantity	integer
	SKU_SALESBO	SKU total sales back ordered quantity	integer
	SKU_FIRSTSALE	SKU first sale timestamp	date, time
	SKU_LASTSALE	SKU last sale timestamp	date, time
	SKU_TOTALSALES	SKU lifetime total sales quantity	integer
	SKU_FIRSTPURCH	SKU first purchase date and time stamp	date, time
	SKU_LASTPURCH	SKU last purchase date and time stamp	date, time
	SKU_TOTALPURCH	SKU lifetime total purchased quantity	integer
	SKU_INSTORESON	SKU first reception in store	date, time
	SKU_MINSKU	SKU minimum quantity	integer
	SKU_MAXSKU	SKU maximum quantity	integer
	SKU_NEXTDELIVERYDATE	Schedule arrival date of the next available PO. If there are multiple PO's for the same product it is the closest date to today's date.	date
	ALT_3PLSKU	Y or N flag to define if the Alternate SKU is a third party software bar code or not (if necessary)	Char 1
	ALT_VENDORBARCODE	Y or N flag to define if the Alternate SKU is a vendor bar code or not (if necessary)	Char 1

3.2 Export Inventory by Store

If ODBC connectivity using the Firebird driver is used, the view is called: ChainDrive_inventory_by_store

SQL Statement:

```
Select *
from ChainDrive_Inventory_by_Store
where sku_branchid = `15
```

TYPE	FIELD	DESCRIPTION	VALUE
INVENTORY BY STORE			
	SKU_SKUID	Chaindrive SKU ID	Integer
	SKU_BRANCHID	Location Branch ID #	alphanumeric 2
	SKU_AVAILABLE	QTY (ON.HAND – RESERVED – ON SALES BO – DEFECTIVE)	Integer

3.3 Import Order Header

TABLE NAME: Import_Orders

TYPE	FIELD	DESCRIPTION	VALUE
ORDER NUMBER			
	ID	Mandatory Primary key Links these 3 tables: Order header, Line items and Payment	integer
	ORDER_NUMBER1	Reference number	integer
	ORDER_NUMBER2	Web Order number	integer
	ORDER_CREATED_AT	Order creation date stamp	date, time
	GROUPID	Unique Shipment ID number Mandatory if using Multiple Ship-to's per order. References GROUPID from Multiple-Ship to's per Order If an order has more than one ship-to per order therefore the Multiple Ship-to's per order table will more than one GROUPID, take the master group id and place it here. (Master GROUPID is the bill-to's primary ship-to info. Payment processors validates the ship-to's info when processing credit card transaction.) If an order has only one ship-to per order therefore the Multiple Ship-to per order table will have only one GROUPID, populate that GROUPID here.	integer
	EXTERNALORDERNUMBER	Do not use this field. Do not populate; keep it empty/null	Varchar 20
	WS_USERID	Do not use this field. Do not populate; keep it empty/null	integer
	BRANCHID	The sales branch ID number. References ChainDrive's branch ID ChainDrive SF usage group: Branches	Varchar(2)

TYPE	FIELD	DESCRIPTION	VALUE
CHAINDRIVE ORDER STATUS			
	IMPORT_STATUS	Mandatory The field values are the following: 0=Importing 1=Ready to Process 2=Processed 3=Errors WEB SITE provider requires importing orders with status = 1 A status = 1 will notify ChainDrive a new order is ready to be imported into our permanent order tables. Only change the import status = 1 when the import_orders, import_order_line_items and import_order_payments have all been populated for the same web order number.	Smallint
	CHAINDRIVE_READ_AT	CHAINDRIVE to auto-populate: The timestamp will only populate when ChainDrive attempted (imported and/or errors are included) to import the order.	Timestamp
	CHAINDRIVE_ORDERID	CHAINDRIVE to auto-populate: ChainDrive unique order id. It will only populate with a value if the order was successfully processed in ChainDrive.	Varchar(8)
	ERRORMESSAGES	CHAINDRIVE to auto-populate: Error messages are only populated when the import status of the orders is flagged as 3.	Varchar(255)

TYPE	FIELD	DESCRIPTION	VALUE
ORDER TYPE			
	ORDERTYPE	ChainDrive's Order type	alphanum 2

TYPE	FIELD	DESCRIPTION	VALUE
ORDER NOTES			
	ORDER_NOTES	Order notes.	alphanumeric 255
	SPEC_NOTES	Special instructions notes Special Notes is concatenated into the Order Notes field when imported into ChainDrive.	alphanumeric 255

TYPE	FIELD	DESCRIPTION	VALUE
REFERENCE			
	REFERRER	Person / Website who referred the customer. If you do not have a referrer, leave the field blank. References ChainDrive's order source values ChainDrive SF usage group: Order Source	alphanumeric 255

TYPE	FIELD	DESCRIPTION	VALUE
ORDER TOTALS			
	DISCOUNT	Discount amount on the order	numeric (15;2)
	ORDER_PRODUCT_COST	Sub-total before taxes.	numeric (15;2)
	ORDER_SHIPPING_COST	Shipping & handling cost. Leave value blank if using multiple ship-to per order Populate ship-to information instead in Multiple Ship-to per Order table	numeric (15;2)
	ORDER_SHIPPING_TYPE_ID	Order shipment type References ChainDrive's transport types values ChainDrive SF usage group: Shipping Methods	alphanumeric 2
	ORDER_TAX_COST	Taxes	numeric (15;2)
	ORDER_TAX_COST2	Secondary taxes (i.e. in Canada it would be PST)	numeric (15;2)

TYPE	FIELD	DESCRIPTION	VALUE
CUSTOMER BILL-TO			
	CUSTID	Customer unique ID number	alphanumeric 8
	GENERICID	Customer's secondary id number (if necessary)	alphanumeric 10
	FIRST_NAME	Customer / Bill to First Name	alphanumeric 30
	LAST_NAME	Customer / Bill to Last Name	alphanumeric 30
	TELEPHONE	Customer / Bill to Telephone	alphanumeric 20
	FAX	Customer / Bill to Fax	alphanumeric 20
	COMPANY	Customer / Bill to Company Name	alphanumeric 50
	ADDRESS1	Customer / Bill to Address Line 1	alphanumeric 255
	ADDRESS2	Customer / Bill to Address Line 2	alphanumeric 255
	CITY	Customer / Bill to City	alphanumeric 50
	STATE	Customer / Bill to State	alphanumeric 30
	ZIP	Customer / Bill to Zip / Postal code	alphanumeric 10
	COUNTRY_ID	Customer / Bill to Country 2 digits id	alphanumeric 2
	EMAIL	Customer / Bill to Email	alphanumeric 255
	IPADDRESS	IP Address recorded at time of transaction If you do not have an IP address, leave the field blank.	alphanumeric 50

TYPE	FIELD	DESCRIPTION	VALUE
CUSTOMER SHIP-TO			
	S_TITLE	Ship to Title <i>Leave values blank if using multiple ship-to's per order</i> <i>Populate ship-to information instead in Multiple Ship-to per Order table</i>	alphanumeric 8
	S_FIRST_NAME	Ship to First Name <i>Leave values blank if using multiple ship-to's per order</i> <i>Populate ship-to information instead in Multiple Ship-to per Order table</i>	alphanumeric 30
	S_LAST_NAME	Ship to Last Name <i>Leave values blank if using multiple ship-to's per order</i> <i>Populate ship-to information instead in Multiple Ship-to per Order table</i>	alphanumeric 30
	S_TELEPHONE	Ship to Telephone <i>Leave values blank if using multiple ship-to's per order</i> <i>Populate ship-to information instead in Multiple Ship-to per Order table</i>	alphanumeric 20
	S_FAX	Ship to Fax <i>Leave values blank if using multiple ship-to's per order</i> <i>Populate ship-to information instead in Multiple Ship-to per Order table</i>	alphanumeric 20
	S_COMPANY	Ship to company name <i>Leave values blank if using multiple ship-to's per order</i> <i>Populate ship-to information instead in Multiple Ship-to per Order table</i>	alphanumeric 50
	S_ADDRESS1	Ship to Address line 1 <i>Leave values blank if using multiple ship-to's per order</i> <i>Populate ship-to information instead in Multiple Ship-to per Order table</i>	alphanumeric 255
	S_ADDRESS2	Ship to Address line 2 <i>Leave values blank if using multiple ship-to's per order</i> <i>Populate ship-to information instead in Multiple Ship-to per Order table</i>	alphanumeric 255
	S_CITY	Ship to City <i>Leave values blank if using multiple ship-to's per order</i> <i>Populate ship-to information instead in Multiple Ship-to per Order table</i>	alphanumeric 50
	S_STATE	Ship to State <i>Leave values blank if using multiple ship-to's per order</i> <i>Populate ship-to information instead in Multiple Ship-to per Order table</i>	alphanumeric 30
	S_ZIP	Ship to Zip / Postal code <i>Leave values blank if using multiple ship-to's per order</i> <i>Populate ship-to information instead in Multiple Ship-to per Order table</i>	alphanumeric 10
	S_COUNTRY_ID	Ship to Country 2 digits id <i>Leave values blank if using multiple ship-to's per order</i> <i>Populate ship-to information instead in Multiple Ship-to per Order table</i>	alphanumeric 2
	LOCATION_TYPE	Ship to Location type <i>Leave values blank if using multiple ship-to's per order</i> <i>Populate ship-to information instead in Multiple Ship-to per Order table</i> (Optional) Used to describe the type of ship-to such as Office, Home.	alphanumeric 50

TYPE	FIELD	DESCRIPTION	VALUE
SOURCE CODE			
	SOURCECODE	Catalog source code number	varchar (10)

3.4 Import Line Details

TABLE NAME: Import_Orders_Line_Items

TYPE	FIELD	DESCRIPTION	VALUE
REFERENTIAL ORDER NUMBER			
	ID	Mandatory Primary key Links these 3 tables: Order header, Line Details and Payment	integer
	ORDER_ID	Same as ID from Order Header Import	integer
	LINENUM	Order line number (no duplicate allowed to the same order)	integer
	GROUPID	Unique Shipment ID number Same as GROUPID from Multiple-Ship to's per Order	integer

TYPE	FIELD	DESCRIPTION	VALUE
PRODUCT SKU			
	ITEM_ID	Item SKU ID (must match with the Product export) References ChainDrive's SKU ID values ChainDrive SF usage group: Inventory Master – Base (SKU Master)	alphanumeric 8

TYPE	FIELD	DESCRIPTION	VALUE
ORDERED QUANTITY			
	QUANTITY	Ordered quantity	integer

TYPE	FIELD	DESCRIPTION	VALUE
SELLING PRICE			
	UNIT_PRICE	Selling price per unit	numeric (15;2)

TYPE	FIELD	DESCRIPTION	VALUE
RETAIL PRICE			
	RETAILPRICE	Initial Retail Price This data is not imported into ChainDrive's live tables. This is just for reference purposes.	numeric (15;2)
	PKPRICE	Current Retail Price This data is not imported into ChainDrive's live tables. This is just for reference purposes.	numeric (15;2)

TYPE	FIELD	DESCRIPTION	VALUE
LINE NOTES			
	PICK_NOTES	Notes (comment) per detail line	blob, 80

3.5 Import Payments

TABLE NAME: Import_Order_Payment

TYPE	FIELD	DESCRIPTION	VALUE
REFERENTIAL ORDER NUMBER			
	ID	Mandatory Primary key Links these 3 tables: Order header, Line Details and Payment	integer
	ORDER_ID	Same as ID from Order Header Import	integer

TYPE	FIELD	DESCRIPTION	VALUE
AMOUNT PAID			
	AMOUNT	Amount paid	numeric (15;2)

TYPE	FIELD	DESCRIPTION	VALUE
CURRENCY			
	CURRENCY	Currency used in the transaction (USD, CAD, etc.) References ChainDrive's currency ID values ChainDrive SF usage group: Currency Maintenance	alphanumeric 3

TYPE	FIELD	DESCRIPTION	VALUE
EXCHANGE			
	EXCHRATE	Exchange rate used for the transaction (if applicable)	numeric (15;2)

TYPE	FIELD	DESCRIPTION	VALUE
CARD INFO			
	CREDCARD	Credit card number (not necessary to provide. Only provide the last 4 digits of the credit card for PCI purposes)	alphanumeric 255
	EXPDATE	Card expiry date MM/YY type (not necessary to provide)	alphanumeric 4
	CARDHOLDER	Name of cardholder	alphanumeric 30

TYPE	FIELD	DESCRIPTION	VALUE
PAYMENT INFO			
	PAYMENT_TYPE_ID	Payment tender type (Amex, Debit, MasterCard, VISA, etc.) References ChainDrive's payment type ID values ChainDrive SF usage group: Payment Types	alphanumeric 8
	CREATED_AT	Payment transaction date stamp	date, time

TYPE	FIELD	DESCRIPTION	VALUE
PRE-AUTHORIZATION			
	AUTHNUMBER	Pre-authorization transaction ID	alphanumeric 15
	REFNUMBER	Pre-authorization authorization number	alphanumeric 12
	CCV2_CODE	CCV2 Code number from payment provider	alphanumeric 1
	AVC_CODE	AVC Code number from payment provider	alphanumeric 1
	CUST_PROFILE_ID	Customer profile id (Authorize.net integration)	integer
	PAY_PROFILE_ID	Payment profile id (Authorize.net integration)	integer
	ISPREAUTH	Pre-authorization Y = Yes, it is a pre-authorization payment N = No, it is a paid/post-authorization payment	alphanumeric 1

- Virtual Terminal
- Upload Transactions
- Recurring Billing
- Fraud Detection Suite
- Customer Information Manager**
- Simple Checkout

Customer Profile [Help](#)

From this screen, you can edit the profile information, add or edit payment and shipping profiles. You can also create a transaction using the payment and shipping profiles listed below.

Customer Profile Information
View History | Edit Profile Info | Delete

Customer Profile ID: 13031560 → **CUST_PROFILE_ID**

Customer ID: 1

Email: ultimatebrent@gmail.com

Description:

Payment Profile(s)
Add Payment Profile

PAY_PROFILE_ID	
12015990	History Edit Delete
16497364	History Edit Delete

Brent Phillips
4686 E Cactus Rd
Scottsdale, Arizona ...
US

CC: XXXX0027
Expiration Date: 07/20

Brent Phillips
13856 Bora Bora Way
Marina Del Rey, Cali...
US

CC: XXXX0002
Expiration Date: 05/19

Shipping Profile(s)
Add Shipping Profile

This Customer Profile does not have any associated Shipping Profiles.

Transaction Detail [Help](#)

AUTHNUMBER

Transaction ID: 2195333334 → **AUTHNUMBER**

[Create ARB Subscription from Transaction](#)

Transaction Status: Authorized/Pending Capture

Void

Capture

Print

Close

Settlement Information

Settlement Amount: USD 24.83

Settlement Date and Time:

Authorization Information

Authorization Amount: USD 24.83

Submit Date /Time: 05-Jul-2013 11:07:29 PDT

Authorization Code: RLJQEG → **REFNUMBER**

Reference Transaction ID: Not Applicable

Transaction Type: Authorization Only

Address Verification Status: Street Address: Match Zip: Matched first 5 digits (Y)

Card Code Status: Not Applicable

CAVV Result Code: Not Applicable

Fraud Score Applied: Not Applicable

Recurring Billing Transaction: N

Partial Capture Status: Not Applicable

Customer IP:

3.6 Import Multiple Ship-to's per Order

TABLE NAME: Import_Ordergroups

TYPE	FIELD	DESCRIPTION	VALUE
ORDER NUMBER			
	ORDER_ID	Mandatory Primary key <i>Same as ORDER_ID from Order Header Import</i>	Integer
	GROUPID	Mandatory Primary key Unique Shipment ID number	Integer
	INVDELID	CHAINDRIVE to auto-populate: Keep it empty/null – ChainDrive's unique shipment ID When order is successfully imported into ChainDrive, system will stamp ChainDrive's shipment ID number in this field.	Integer

TYPE	FIELD	DESCRIPTION	VALUE
SHIP-TO INFO			
	FIRST_NAME	Ship to First Name	Varchar 60
	LAST_NAME	Ship to Last Name	Varchar 60
	TELEPHONE	Ship to Telephone	Varchar 20
	FAX	Ship to Fax	Varchar 20
	COMPANY	Ship to company name	Varchar 50
	ADDRESS1	Ship to Address line 1	Varchar 255
	ADDRESS2	Ship to Address line 2	Varchar 255
	CITY	Ship to City	Varchar 50
	STATE	Ship to State	Varchar 30
	ZIP	Ship to Zip / Postal code	Varchar 10
	COUNTRY_ID	Ship to Country 2 digits id	Varchar 2
	EMAIL	Ship to Email address	Varchar 255

TYPE	FIELD	DESCRIPTION	VALUE
SHIPMENT INFO			
	ORDER_SHIPPING_TYPE_ID	Shipments transport type References ChainDrive's transport types values ChainDrive SF usage group: Shipping Methods	Varchar 2
	WEIGHT	Shipments total weight	Numeric(9,2)
	SHIPPINGCHARGEID	Mandatory per each shipment Shipments shipping method ID value References ChainDrive's shipping charges values ChainDrive SF usage group: Shipping Charge Shipping : <input type="text" value=""/>	Varchar 4
	EXPEDITECHARGEID	Shipments expedite charge ID value References ChainDrive's shipping charges values ChainDrive SF usage group: Shipping Charge Expedite : <input type="text" value="Standard"/>	Varchar 4
	SHIPPINGCHARGES	Shipments base shipping charge dollar amount	Numeric(15,2)
	EXPEDITEAMOUNT	Shipments expedited shipping charge dollar amount	Numeric(15,2)
	USREXPEDITEAMOUNT	Shipments manually entered by user expedited shipping charge dollar amount Expedite : <input type="text" value="0.00"/>	Numeric(15,2)
	ACTUALSHIPPINGCHARGE	Shipments actual shipping charge dollar amount charged by the shipping carrier	Numeric(15,2)

TYPE	FIELD	DESCRIPTION	VALUE
GIFT MESSAGE			
	SHIPASGIFT	Shipment is flagged as a gift shipment. Y = Shipment is a gift shipment N = Shipment is not a gift shipment	Char1
	GIFTMESSAGE	Shipments gift message Supports only one gift message per shipment	Varchar 255

3.7 Export Order Consultation/Tracking

If ODBC connectivity using the Firebird driver is used, the view is called: ChainDrive_orders

SQL Statement:

```
Select *
from ChainDrive_orders
where DEL_SHIPDATE = 'TODAY'
order by ORDERID
ROWS 100
```

TYPE	FIELD	DESCRIPTION	VALUE
ORDER HEADER			
	ORDERID	ChainDrive Order ID	alphanumeric 10
	CUSTID	ChainDrive Customer ID	alphanumeric 8
	ORDERDATE	Order Date	date, time
	SUBTOTAL	Order subtotal amount	numeric (15;2)
	TOTAL	Order total amount	numeric (15;2)
	ORDERTYPE	ChainDrive order type ID	alphanumeric 2
	CASHID	Cash unit ID	alphanumeric 4
	TRANSPORTTYPE	Transport Type ID	alphanumeric 2
	TRANSPORT	Transport Type description	alphanumeric 40
	INVOICE	Invoice number	alphanumeric 10
	BALANCE	Balance between payments and order total amount	numeric (15;2)
	ITEMS	Number of items ordered	integer
	LINES	Number of lines in the order	integer
	TAX1	Tax 1 amount	numeric (15;2)
	TAX2	Tax 2 amount	numeric (15;2)
	TAX3	Tax 3 amount	numeric (15;2)
	SHIPTOID	ChainDrive ship to ID	alphanumeric 8
	BRANCHID	ChainDrive branch ID	alphanumeric 2
	CUSTPO	Web provider order number	alphanumeric 20
	REFERRER	Referrer	alphanumeric 240
	LOCATION_TYPE	Location type	alphanumeric 20
	EMAIL	Email address	alphanumeric 255
	COMPANY	Company name	alphanumeric 20
	ORDERSTAT	Current order status	alphanumeric 2

TYPE	FIELD	DESCRIPTION	VALUE
CUSTOMER			
	CUST_NAME	Customer Last Name	alphanumeric 30
	CUST_FIRST_NAME	Customer First Name	alphanumeric 30
	CUST_ADDRESS1	Customer primary address	alphanumeric 30
	CUST_ADDRESS2	Customer secondary address	alphanumeric 30
	CUST_CITY	Customer city	alphanumeric 25
	CUST_STATE	Customer state id	alphanumeric 2
	CUST_COUNTRY	Customer country id	alphanumeric 2
	CUST_TELEPHONE	Customer telephone number	alphanumeric 14
	CUST_FAX	Customer fax number	alphanumeric 14

TYPE	FIELD	DESCRIPTION	VALUE
SHIPPING			
	SHIP_NAME	Shipping Last Name	alphanumeric 30
	SHIP_FIRST_NAME	Shipping First Name	alphanumeric 30
	SHIP_ADDRESS1	Shipping primary address	alphanumeric 30
	SHIP_ADDRESS2	Shipping secondary address	alphanumeric 30
	SHIP_CITY	Shipping city	alphanumeric 25
	SHIP_STATE	Shipping state id	alphanumeric 2
	SHIP_COUNTRY	Shipping country id	alphanumeric 2
	SHIP_TELEPHONE	Shipping telephone number	alphanumeric 14
	SHIP_FAX	Shipping fax number	alphanumeric 14

TYPE	FIELD	DESCRIPTION	VALUE
DELLIVERY			
	DEL_SHIPPINGCHARGES	Shipping Charges	numeric (15;2)
	DEL_WEIGHT	Delivery total weight	numeric (9;2)
	DEL_QTOFBOXES	Delivery quantity of boxes	integer
	DEL_SHIPDATE	Delivery shipping date	date, time
	DEL_SHIPPINGNUMBER	Delivery shipping number	alphanumeric 40

TYPE	FIELD	DESCRIPTION	VALUE
BOX			
	BOX_TRACKINGNUM	Multiple tracking numbers per delivery per box	alphanumeric 40
	BOX_BOXNUMBER	Multiple box numbers per delivery per box	integer
	BOX_SHIPPINGCHARGES	Multiple shipping charges per delivery per box	Numeric (15,2)
	BOX_WEIGHT	Multiple weight per delivery per box	Numeric (9,2)
	BOX_TRANSPORT	Multiple transport per delivery per box	Varchar (2)

3.8 Export Customer Bill-to Consultation

If ODBC connectivity using the Firebird driver is used, the view is called: ChainDrive_CustomerBillTo

SQL Statement:

```
Select *
from ChainDrive_CustomerBillTo
```

TYPE	FIELD	DESCRIPTION	VALUE
CUSTOMER BILL-TO			
	CUSTID	Customer bill-to ID Primary key of the customer	Integer
	CUST_GENERICID	Customer bill-to generic ID	Varchar 10
	CUST_FIRST_NAME	Customer bill-to First Name	alphanum 30
	CUST_LAST_NAME	Customer bill-to Last Name	alphanum 30
	CUST_ADDRESS1	Customer bill-to primary address	alphanum 30
	CUST_ADDRESS2	Customer bill-to secondary address	alphanum 30
	CUST_CITY	Customer bill-to city	alphanum 25
	CUST_STATE	Customer bill-to state id	alphanum 2
	CUST_COUNTRY	Customer bill-to country id	alphanum 2
	CUST_ZIPCODE	Customer bill-to zip code	Varchar 9
	CUST_AREACODE	Customer bill-to area code number	Varchar 3
	CUST_PRIMARYTEL	Customer bill-to primary telephone number	char 8
	CUST_INTERNATIONAL_TELEPHONE	Customer bill-to international telephone number	alphanum 14
	CUST_FAX	Customer bill-to fax number	alphanum 14
	CUST_EMAIL	Customer bill-to email address	Varchar 255
	CUST_DO_NOT_CALL	Customer bill-to do not call the customer Y = customer does not want to be called N = (default set to N) customer does want to be called	Char 1
	CUST_CREATION_DATE	Creation date of the customer bill-to record	Date/Time
	CUST_EDIT_DATE	Last edit date of the customer bill-to record	Date/Time
	CUST_ACCT_DISCOUNT_METHOD	Discount Method: P = Price L = Level M = Markup D = Discount	Char 1
	CUST_ACCT_GLOBAL_DISCOUNT	Global Discount Level If the Cust_Acct_Global_Discount = 2, use PR_Pkprice2. If the Cust_Acct_Global_Discount = 3, use PR_Pkprice3.	Integer
	CUST_ACCT_END_DISCOUNT_DATE	End Discount Date	Date
	CUST_ACCT_CREATION_DATE	Customer accounting creation date	Date/Time
	CUST_ACCT_EDIT_DATE	Customer accounting edit date	Date/Time

3.9 Export Kitted Components

If ODBC connectivity using the Firebird driver is used, the view is called: Inventory_Kits_Components

This view is to display the virtual kitted products (product code and product ID) and the item components that make up the virtual kitted product (SKU ID and quantities in kit).

SQL Statement:

```
Select *
from Inventory_Kits_Components
order by productcode
```

TYPE	FIELD	DESCRIPTION	VALUE
Inventory Kits Components			
	PRODUCTCODE	Internal kitted product code associated References the INV_PRODUCTCODE from ChainDrive_Inventory	Varchar 20
	PRODUCTID	ChainDrive auto-generated Product ID number of the kitted item. References the INV_PRODUCTID from ChainDrive_Inventory	alphanum 2
	SELECTEDSKU	ChainDrive SKU ID for the kitted component. References the SKU_SKUID from ChainDrive_Inventory	Integer
	QTYINKIT	The quantity of kitted component items that make up the kitted product.	Integer